



ART GALLERY & FRAME SHOP

Kansas City, Missouri | BUSINESS FOR SALE



PRICE NEGOTIABLE

BUSINESS SALE PRICE: \$125,000 | 1,649 SF

DEMOGRAPHICS

	1 mile	3 miles	5 miles
Estimated Population	14,478	117,303	249,684
Avg. Household Income	\$186,400	\$107,966	\$90,282

- Business has been at this location for 30 years
- Tremendous following and great reputation
- All employees will stay
- Rent is \$2,549/month
- Owner will stay through the transition
- Full basement workshop
- Strong profits
- Absolutely turn-key

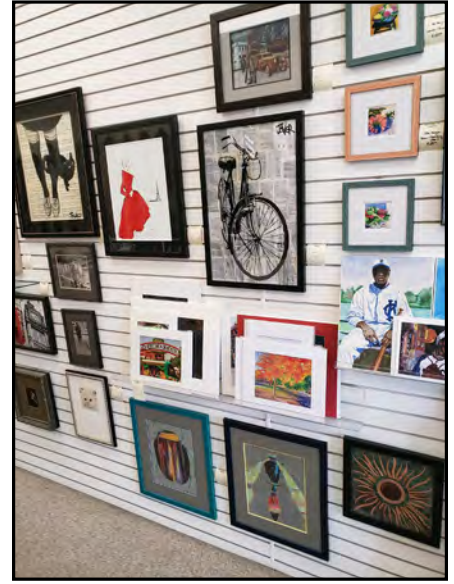
 [CLICK HERE TO VIEW MORE LISTING INFORMATION](#)

For More Information Contact:

Exclusive Agent

LARRY GAINES | 816.412.7387 | lgaines@blockandco.com







ART GALLERY & FRAME SHOP

Kansas City, Missouri | BUSINESS FOR SALE

SITE DEMOGRAPHICS	1 mi radius	3 mi radius	5 mi radius
Population			
2021 Estimated Population	14,478	117,303	249,684
2026 Projected Population	14,586	117,044	251,457
2010 Census Population	14,778	114,408	236,171
2000 Census Population	15,059	124,666	259,947
Projected Annual Growth 2021 to 2026	0.1%	-	0.1%
Historical Annual Growth 2000 to 2021	-0.2%	-0.3%	-0.2%
2021 Median Age	40.1	38.0	38.2
Households			
2021 Estimated Households	6,291	54,832	117,601
2026 Projected Households	6,364	55,317	120,181
2010 Census Households	6,327	52,244	108,200
2000 Census Households	6,522	55,924	116,540
Projected Annual Growth 2021 to 2026	0.2%	0.2%	0.4%
Historical Annual Growth 2000 to 2021	-0.2%	-	-
Race and Ethnicity			
2021 Estimated White	89.6%	61.8%	59.0%
2021 Estimated Black or African American	5.2%	30.5%	30.8%
2021 Estimated Asian or Pacific Islander	2.0%	2.5%	2.8%
2021 Estimated American Indian or Native Alaskan	0.3%	0.4%	0.4%
2021 Estimated Other Races	2.8%	4.9%	6.9%
2021 Estimated Hispanic	3.7%	5.9%	9.1%
Income			
2021 Estimated Average Household Income	\$186,400	\$107,966	\$90,282
2021 Estimated Median Household Income	\$122,500	\$79,719	\$70,136
2021 Estimated Per Capita Income	\$81,023	\$50,585	\$42,621
Education (Age 25+)			
2021 Estimated Elementary (Grade Level 0 to 8)	0.5%	1.4%	1.9%
2021 Estimated Some High School (Grade Level 9 to 11)	0.9%	4.3%	5.2%
2021 Estimated High School Graduate	7.2%	18.4%	20.6%
2021 Estimated Some College	13.5%	16.8%	18.9%
2021 Estimated Associates Degree Only	3.8%	5.4%	6.2%
2021 Estimated Bachelors Degree Only	40.0%	31.2%	28.1%
2021 Estimated Graduate Degree	34.0%	22.4%	19.1%
Business			
2021 Estimated Total Businesses	674	5,283	11,457
2021 Estimated Total Employees	4,879	68,725	166,146
2021 Estimated Employee Population per Business	7.2	13.0	14.5
2021 Estimated Residential Population per Business	21.5	22.2	21.8

©2021. Sites USA. Chandler, Arizona. 480-491-1112 Demographic Source: Applied Geographic Solutions 5/2021. TIGER Geographv - RS1

